

## WELCOME

Welcome to your iHealth Align Gluco-Monitoring System (the iHealth system). The iHealth system is designed to be used with the free iHealth Gluco-Smart App (the App) and will help you manage your diabetes.

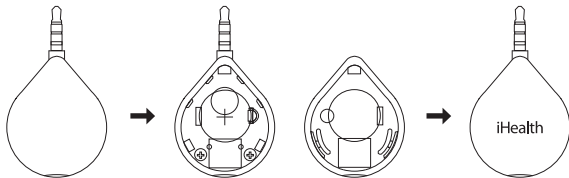
## COMPATIBILITY

The iHealth system is compatible with select iOS and Android devices. For a complete list of compatible devices, visit our support page on [www.ihealthlabs.com](http://www.ihealthlabs.com).

## INSTALL THE BATTERY

Your meter comes with two 3V CR1620 lithium battery. The battery lasts up to six months depending on the usage. Follow the instructions below to replace the battery.

1. Turn the meter over with the iHealth logo facing down.
2. Lift off the back cover by pulling firmly from the notch next to the test strip port.
3. Insert the new battery with the "+" side facing up and snap it into the battery tray.
4. Press the back panel back in place by inserting the front clip into place and snapping the back of the cover down.



When the “Battery is low” indicator appears on the app, replace the battery to ensure successful and accurate measurements.



Disposal – Electrical products should not be disposed of with household waste. Please recycle where facilities exist. Check with your local authority or retailer for recycling advice.

## GET STARTED

### • Download the App

Prior to first use, download the free iHealth Gluco-Smart App to your mobile device from the Apple App Store or Google Play Store. Follow the on-screen instructions to create your iHealth account.

### • Access the iHealth Cloud Account

Your iHealth account also gives you access to the free and secure iHealth cloud service. Go to [www.ihealthlabs.com](http://www.ihealthlabs.com) and click “Sign In” for access once your account has been created.

### • Scan to Code the Test Strips

Please carefully read and follow the instructions below to avoid getting inaccurate test results and/or test strip tracking errors:

Connect your mobile device to the Internet and open the Gluco-Smart App. When prompted, scan the QR code on the top of the iHealth test strip vial to calibrate the test strips with the meter. You must scan the QR code each time a new vial is opened.

### • Test blood glucose level

**Step 1: Launch the App**

**Step 2: Connect the meter**

- Plug your meter into the headphone jack of your mobile device. The iHealth logo on the meter should be facing the same direction as the screen of your mobile device.

**Note:**

- Do not twist your meter during the measurement process.
- Remove the case on your mobile device before connecting the meter.

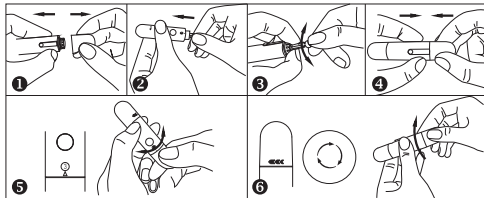
**Step 3: Insert the test strip into the meter’s strip port**

Make sure the red arrow marker on the test strip is facing the same direction as the iHealth logo on the meter.



#### Step 4: Prepare the lancing device

- 1 Snap off the lancing device cap
- 2 Insert a new lancet firmly into the lancing device holder cup
- 3 Twist the lancet cover off
- 4 Replace the lancing device cap
- 5 Set the lancing level to your desired pressure level
- 6 Cock the handle until it clicks



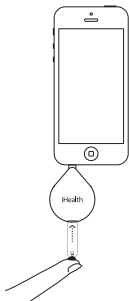
#### Step 5: Obtain a blood sample

Press the lancing device against the site to be lanced and then press the release button to puncture the site. Gently squeeze the site until a drop of blood forms.



**Step 6: Apply the blood sample to the test strip**

Quickly apply the blood sample to the absorbent hole on the tip of the test strip. Make sure the confirmation window of the test strip is completely filled with the blood sample, and remove your finger.



**Step 7: Read the test results**

After approximately 5 seconds, your blood glucose result will appear on your mobile device screen. The meter needs to remain connected to your mobile device during testing and syncing.

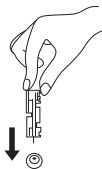
**Step 8: Discard the used test strip and lancet**

Remove the used test strip from the meter using a tissue.

Remove the lancet from the lancing device. (Tip: Prior to disposal, stick the lancet into the cover that was snapped off earlier in the process.)  
Discard the used test strip and lancet properly.

**Note:**

*Refer to the Cleaning and Disinfecting section of the Owner's Manual for cleaning and disinfecting procedures.*



## PRODUCT SUPPORT

For more product information, please go to Settings > Help with the app or visit us online at [www.ihealthlabs.com](http://www.ihealthlabs.com)

## CUSTOMER SERVICE

If you need additional iHealth test strips, iHealth control solution, lancing devices, or lancets, please contact:

USA:

Tel: +1-855-816-7705 (8:30 a.m. - 5:30 p.m. PST, Monday to Friday, except holidays)

Email: [support@ihealthlabs.com](mailto:support@ihealthlabs.com)

Europe:

Tel: +33(0)1 44 94 04 81 (9:00 a.m. - 5:30 p.m. CET, Monday to Friday, except holidays)

Email: [support@ihealthlabs.eu](mailto:support@ihealthlabs.eu)

For additional product information, please go to [www.ihealthlabs.com](http://www.ihealthlabs.com).

**IMPORTANT SAFETY INSTRUCTIONS:** ONLY use iHealth test strips. The meter and lancing device are for single patient use only. Do not share them with anyone, including other family members. Please refer to the iHealth Align Gluco-Monitoring System Owner's Manual for more information.

iHealth is a trademark of iHealth Lab Inc.

©2013 iHealth Lab Inc. All rights reserved.

Manufactured for iHealth Lab Inc., Mountain View, CA 94043, USA.